

2nd Trombone

Danse Espagnole (No. 2)

Lyle Lockington

♩ = 126

Paso Doble

Musical staff 1 (measures 1-5). *mf*

Musical staff 2 (measures 6-12). Measure 7 contains a first ending bracket with a '2' above it. *mf*

Musical staff 3 (measures 13-18). *f*

Musical staff 4 (measures 19-24). First ending bracket with '1.' above and '2.' to the right. *f*

Musical staff 5 (measures 25-29). *mf*

Musical staff 6 (measures 30-35). *f*

Musical staff 7 (measures 36-40). *f*

Musical staff 8 (measures 41-44). *ff*

Musical staff 9 (measures 45-48). Measure 48 contains a first ending bracket with a '2' above it. *ff*

50



55



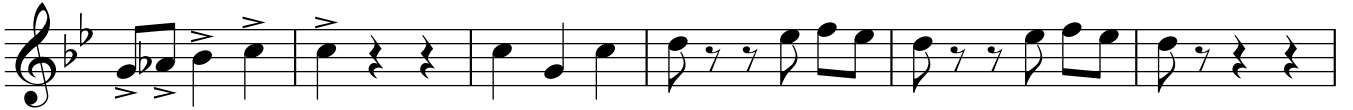
62



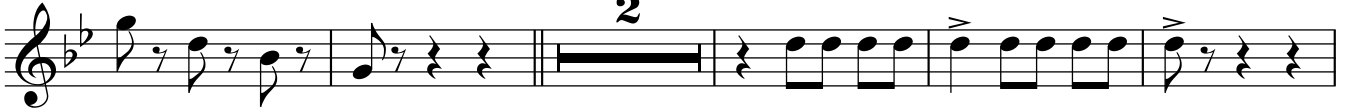
70



77



83



90



96

